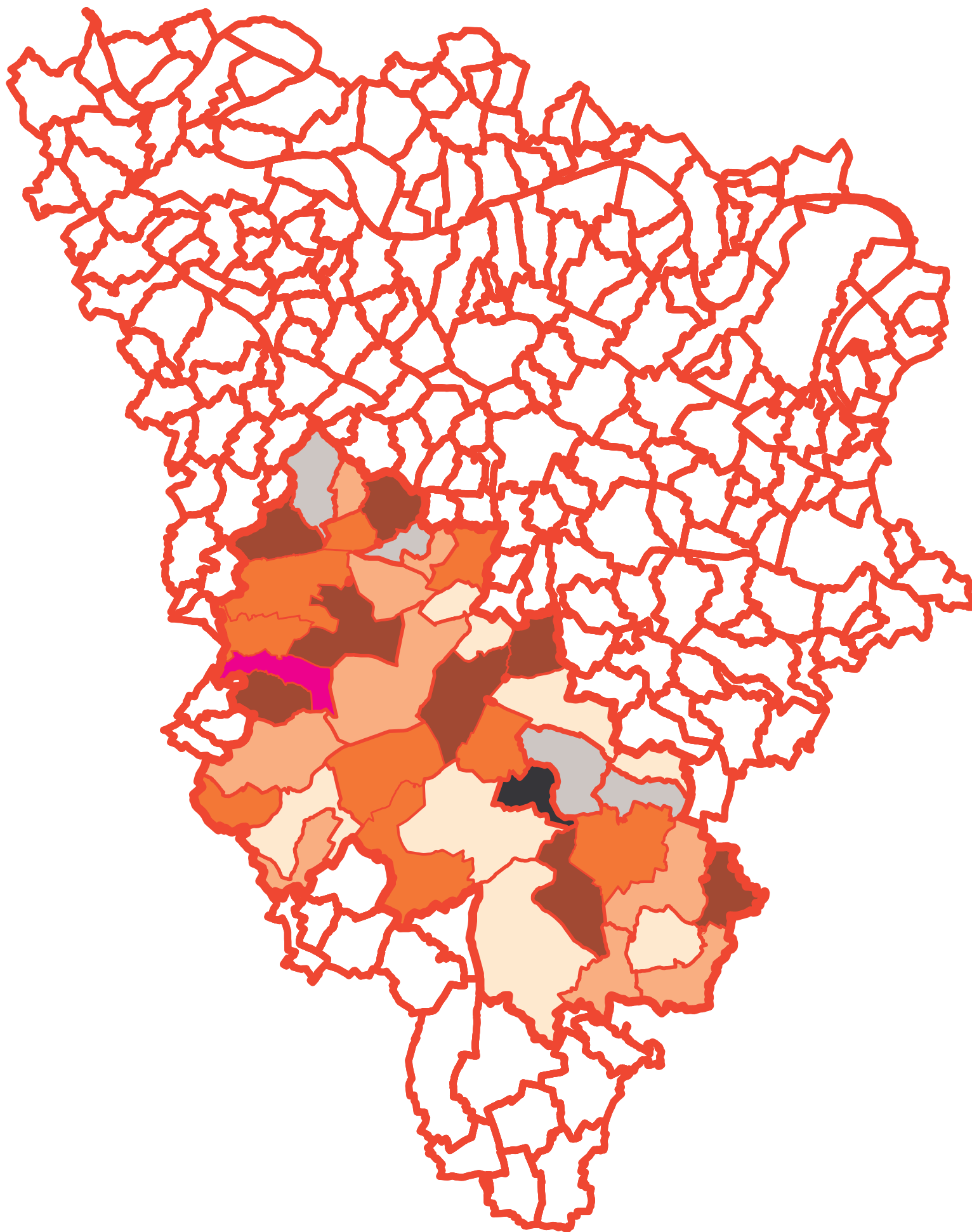









1/400 000

0 5 10 15 20 km



Evolution de la population entre 1982 et 1999

par commune (en %)

-  -10 - 0
-  0 - +14
-  +14 - +27
-  +27 - +40
-  +40 - +55
-  +55 - +75
-  +98



MINISTÈRE
DE L'AGRICULTURE
ET DE LA PÊCHE

Préfecture des Yvelines

DDAF 78